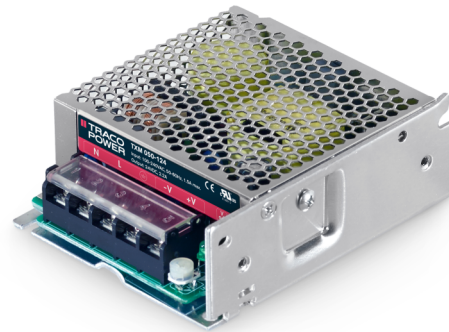


- Very compact metal cased power supplies
- High operating temperature up to 70°C
- Low no load power consumption <0.5W
- Screw terminal block
- No internal fan
- Universal AC input, full range
- Withstand 300 VAC surge input for 5 s
- Adjustable output voltage
- 3-year product warranty



The TXM 050 series of 50 Watt is a family of enclosed AC/DC power supplies designed for cost critical applications. With a low profile metal case and screw terminal block connections, they are easy to install in any equipment. There are five models of single output voltages from 5 VDC to 48 VDC. These power supplies have universal input and comply with European EMC standards and the Low Voltage Directive (LVD).

Models				
Order Code	Output Power max.	Output Voltage nom. (adjustable)	Output Current max.	Efficiency typ.
TXM 050-105	40 W	5 VDC (4.8 - 5.5 VDC)	8'000 mA	80 %
TXM 050-112	50 W	12 VDC (11.4 - 13.2 VDC)	4'200 mA	85 %
TXM 050-115	51 W	15 VDC (14.3 - 15.0 VDC)	3'400 mA	86 %
TXM 050-124	53 W	24 VDC (22.8 - 26.4 VDC)	2'200 mA	87 %
TXM 050-148	54 W	48 VDC (45.6 - 52.8 VDC)	1'100 mA	89 %

Input Specifications

Input Voltage	- AC Range	Operational Range: 85 - 264 VAC (Full Range) Rated Range: 100 - 240 VAC (Full Range)
	- DC Range	Operational Range: 120 - 375 VDC (Designed for, no certification) Polarity: irrelevant (Surge voltage (5 s max.): 300 VAC max.)
Input Frequency		Operational Range: 47 - 63 Hz Certified: 50/60 Hz
Power Consumption	- No load & Vin = 230 VAC	500 mW max.
	- No load & Vin = 115 VAC	500 mW max.
Input Current	- Full load & Vin = 115 VAC	1'300 mA max.
Input Inrush Current	- At 230 VAC	45 A max.
Recommended Input Fuse		(The need of an external fuse has to be assessed in the final application.)

Output Specifications

Output Voltage Adjustment		-5% to +10% (By trim potentiometer) Output power must not exceed rated power!
Voltage Set Accuracy		±3% max.
Regulation	- Input Variation (Vmin - Vmax)	0.5% max.
	- Load Variation (0 - 100%)	1% max.
Ripple and Noise (20 MHz Bandwidth)	5 VDC model:	80 mVp-p max. (w/ 0.1 µF 10 µF)
	12 VDC model:	120 mVp-p max. (w/ 0.1 µF 10 µF)
	15 VDC model:	120 mVp-p max. (w/ 0.1 µF 10 µF)
	24 VDC model:	200 mVp-p max. (w/ 0.1 µF 10 µF)
	48 VDC model:	200 mVp-p max. (w/ 0.1 µF 10 µF)
Minimum Load		Not required
Temperature Coefficient		±0.03 %/K max.
Hold-up Time	- At 230 VAC	50 ms min.
Start-up Time	- At 230 VAC	1'500 ms max.
Start-up Overshoot Voltage		5% max.
Short Circuit Protection		Continuous, Automatic recovery
Output Current Limitation		105 - 150% of Iout max.
Overvoltage Protection		115 - 150% of Vout nom.
Transient Response	- Response Deviation	9% max. (75% to 100% Load Step)
	- Response Time	400 µs typ. (75% to 100% Load Step)

Safety Specifications

Standards	- IT / Multimedia Equipment	EN 60950-1 EN 62368-1 IEC 60950-1 IEC 62368-1 UL 60950-1 UL 62368-1
	- Certification Documents	www.tracopower.com/overview/txm050
Protection Class		Class I (Prepared): Connection to PE See application note: www.tracopower.com/info/protection-class.pdf
Pollution Degree		PD 2
Over Voltage Category		OVC II

All specifications valid at 230 VAC, resistive full load and +25°C after warm-up time, unless otherwise stated.

EMC Specifications

EMI (Emissions)	- Conducted Emissions	EN 55032 class A (internal filter) EN 55032 class B (internal filter)
	- Radiated Emissions	EN 55032 class A (internal filter) EN 55032 class B (internal filter)
	- Harmonic Current Emissions	EN 61000-3-2, class A
	- Voltage Fluctuations & Flicker	EN 61000-3-3
EMS (Immunity)		EN 55024 (IT Equipment) EN 55035 (Multimedia)
	- Electrostatic Discharge	Air: EN 61000-4-2, ± 8 kV, perf. criteria B Contact: EN 61000-4-2, ± 4 kV, perf. criteria B
	- RF Electromagnetic Field	EN 61000-4-3, 3 V/m, perf. criteria A
	- EFT (Burst) / Surge	EN 61000-4-4, ± 1 kV, perf. criteria B
		L to L: EN 61000-4-5, ± 1 kV, perf. criteria B
		L to PE: EN 61000-4-5, ± 2 kV, perf. criteria B
	- Conducted RF Disturbances	EN 61000-4-6, 3 Vrms, perf. criteria A
	- PF Magnetic Field	Continuous: EN 61000-4-8, 1 A/m, perf. criteria A
	- Voltage Dips & Interruptions	230 VAC / 50 Hz: EN 61000-4-11 30%, 25 periods, perf. criteria C >95%, 0.5 periods, perf. criteria B >95%, 250 periods, perf. criteria C

General Specifications

Relative Humidity		90% max. (non condensing)
Temperature Ranges	- Operating Temperature	-25°C to +70°C
	- Storage Temperature	-40°C to +85°C
Power Derating	- High Temperature	1.5 %/K above 50°C (5 Vout model) 1 %/K above 50°C (other models)
	- Low Input Voltage	0.74 %/V below 115 VAC
Cooling System		Natural convection (20 LFM)
Altitude During Operation		5'000 m max.
Regulator Topology		Flyback Converter
Switching Frequency		65 kHz typ. (PWM)
Insulation System		Reinforced Insulation
Working Voltage (rated)		275 VAC
Isolation Test Voltage	- Input to Output, 60 s	3'000 VDC
	- Input to Case or PE, 60 s	1'500 VAC
	- Output to Case or PE, 60 s	500 VAC
Creepage	- Input to Output	6.1 mm min.
Clearance	- Input to Output	6.1 mm min.
Isolation Resistance	- Input to Output, 500 VDC	100 M Ω min.
Leakage Current	- Earth Leakage Current	3500 μ A max.
	- Touch Current	250 μ A max.
Reliability	- Calculated MTBF	200'000 h (MIL-HDBK-217F, ground benign)
Housing Material		Aluminum
Housing Type		Metal Case
Mounting Type		Chassis Mount
Connection Type		Screw Terminal
Weight		270 g

All specifications valid at 230 VAC, resistive full load and +25°C after warm-up time, unless otherwise stated.

Environmental Compliance - REACH Declaration

www.tracopower.com/info/reach-declaration.pdf

- RoHS Declaration

REACH SVHC list compliant

REACH Annex XVII compliant

www.tracopower.com/info/rohs-declaration.pdf

Exemptions: 7(a), 7(c)-I

(RoHS exemptions refer to the component concentration only, not to the overall concentration in the product (O5A rule).)

- SCIP Reference Number

9ca2f776-0a1e-4139-86c0-d553473746ef

Additional Information

Supporting Documents

www.tracopower.com/overview/txm050

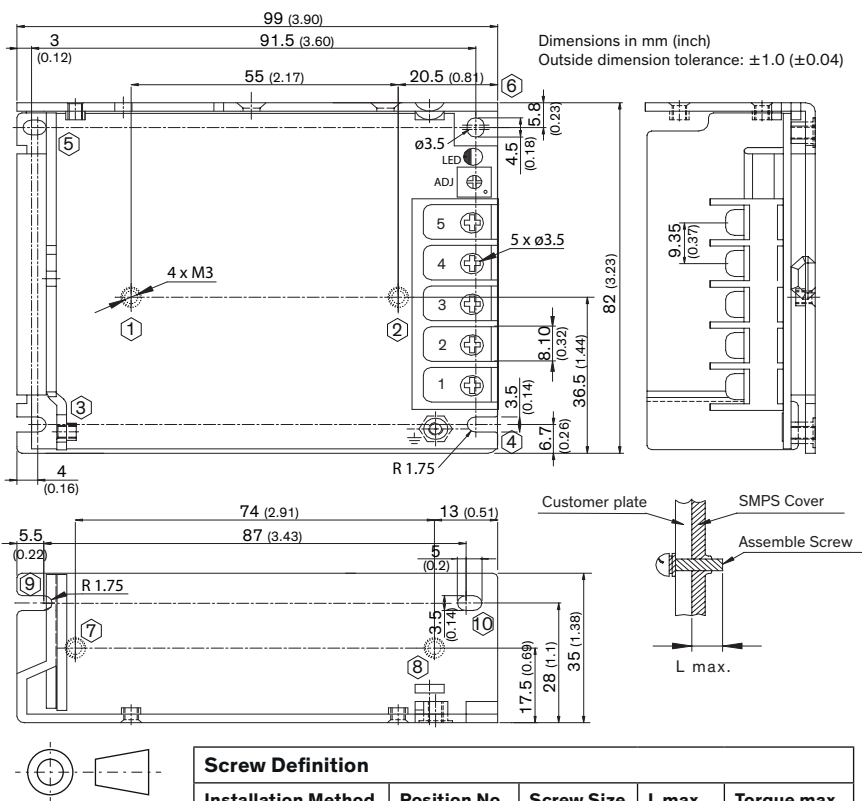
Frequently Asked Questions

www.tracopower.com/glossary-faq

Glossary

www.tracopower.com/info/glossary.pdf

Outline Dimensions



Pin-Out

Pin	Function
1	AC (N)
2	AC (L)
3	PE
4	- Vout
5	+ Vout

Screw locked torque:
8.0 kgfcm (0.78 Nm) max.

Screw Definition

Installation Method	Position No.	Screw Size	L max.	Torque max.
Bottom Installation	1-2	M3	4 (1.6)	6.5 kgfcm
	3-6	M3	4 (1.6)	6.5 kgfcm
Side Installation	7-8	M3	4 (1.6)	6.5 kgfcm
	9-10	M3	4 (1.6)	6.5 kgfcm