



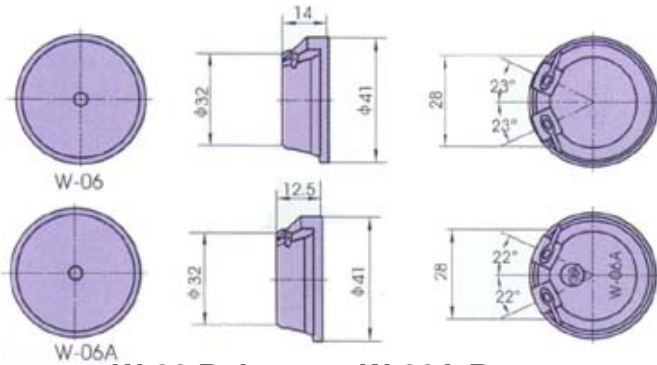
• **W-06 ( 06A )**



**FEATURES:**

- Small and light
- Compact structure
- High reliability

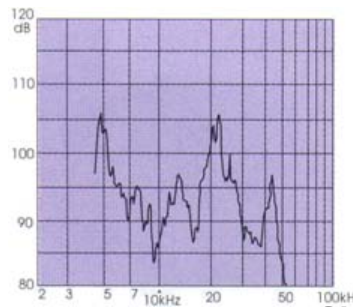
**DIMENSIONS: (Unit: mm)**



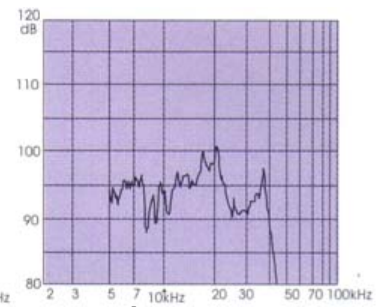
W-06 Polyester, W-06A Paper

**CHARACTERISTICS:**

**W-06**



**W-06A**



2.83V<sub>RMS</sub> Sine Wave/50cm

**ELECTRICAL SPECIFICATIONS :**

Model No.	W-06	W-06A
Min. Sound Pressure Level (dB)	90 / 22 ± 1kHz/2.83V <sub>RMS</sub> Sine Wave/50cm	
Rated Voltage (V <sub>RMS</sub> )	2.83	
Max. Operating Voltage (V <sub>RMS</sub> )	10	
Resonant Frequency (kHz)	22 ± 1	
Frequency Range (kHz)	4 ~ 50	
Operating Temperature (°C)	-10 ~ +50	-20 ~ +70
Weight (g)	6.5	
Case Material/Colour	Fire-resistance ABS/Black	

**PACKING INFORMATION :**

Packing :	1000 pcs per export carton
Carton Size :	47 X 30.5 X 35 cm
G. Weight :	8 kgs
N. Weight :	6.5 kgs